

# Computer, Television, Electronic Recycling

## Do Riverside County Landfills accept this waste?

Yes

No  
 (See Disposal Locations)

Conditionally  
 (See Special Conditions)

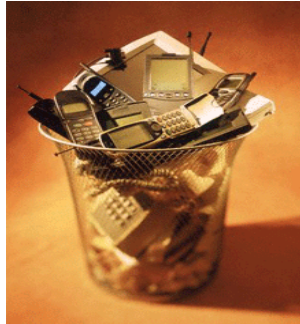
Case by case  
 (See Approval Process)

## Are there other alternatives for this waste?

Yes  
 (See Alternative Recycling Locations)

No

Hans Kernkamp,  
 General Manager-  
 Chief Engineer  
 14310 Frederick St.  
 Moreno Valley, CA  
 92553  
 (951) 486-3200  
 www.rivcowm.org



## Computer, Television, and Electronic Devices

Electronic Waste or E-Waste is a broad category of waste comprised of computer monitors, TVs, and electronic devices including, but not limited to: CPU/computer towers, printers, audio and video cassette players/recorders, telephones, answering machines, cell phones, CD players, stereo equipment and fax machines.

These items are prohibited from burial at landfills because their components might damage the environment due to high heavy metal content and other hazardous waste components.

These items are accepted at all Department landfills for recycling only. Customers are directed to place these items in the recycling area in a manner that prevents breakage. Waste loads containing these items which are mixed with solid waste will be refused.

Please contact your local city government office to see if an E-Waste collection event has been scheduled. Many of these events are free to city residents and are held frequently throughout the county. E-Waste is accepted at the County Household Hazardous Waste collection sites. For dates and locations, please see the [HHW schedule at: http://www.rivcowm.org/opencms/hhw/index.html#\\_HHW\\_Collection\\_Locations](http://www.rivcowm.org/opencms/hhw/index.html#_HHW_Collection_Locations)

## Riverside County Landfill Charges

Acceptable Computer Monitors, TVs, and electronic device items are charged at the routine refuse rate. However, for customers disposing of two TV's or less, there is no charge. For the current fee schedule please visit the County's website at [http://www.rivcowm.org/opencms/landfill\\_info/landfill\\_fees.html](http://www.rivcowm.org/opencms/landfill_info/landfill_fees.html)

## Computer and Monitor Reuse

### Regional Occupational Program Vocation School

47-336 Oasis St.  
 Indio, CA 92201  
 760-863-3300

Computers must be Pentium I-III. Computer monitors must be in usable condition. Please call for details.

**City of Riverside Digital In Class Program 951-905-2026**

# Computer, Monitor, and Electronic Recycling

## WASTE FACT SHEET

February 2012

Page 2 of 2

### Alternative Recycling Locations

For information on local recyclers, please see the following websites:

<http://www.calrecycle.ca.gov/Electronics/Reports/SearchResult.aspx?txtParticipantName=&txtCEWID=&stCounty=36&Mode=View>

[www.earth911.com](http://www.earth911.com)

Many computer manufacturers throughout the country have buy-back or recycling programs that will properly dispose of your old computer. Terms and conditions for each manufacturer vary: see the following websites for additional information.

<http://www.gateway.com> or call 1-888-888-2075

<http://www.dell.com/recycling> or call 1-800-915-3355

<http://www.hp.com/hpinfo/globalcitizenship/environment/recycling/product-recycling.html> or call 1-800-752-0900

<http://www.calrecycle.ca.gov/Electronics/ACT2003/recovery/approved>

Please go to the Department of Resources Recycling and Recovery (CalRecycle) website for a complete listing of electronics recyclers in our county and surrounding areas. They can be reached at <http://www.calrecycle.ca.gov> or by calling 916-341-6000

This service provider information above and on the previous page is offered as a public service in an effort to eliminate illegal and improper waste disposal. As the information may not be comprehensive, the Department encourages the public to research additional companies that are available for the services sought. The companies are not affiliated, endorsed or regulated by the Department. Accordingly, as with any professional service, please confirm the accuracy of the company's information and request copies or verification of the company's license and/or permits to provide the service, prior to utilizing its services. Under no circumstances, directly or indirectly, shall the Department be held responsible or liable for reliance on this information. If you would like to include your company on the list, please contact [wasteapproval@co.riverside.ca.us](mailto:wasteapproval@co.riverside.ca.us) or call (951) 486-3200.

#### Internal Operating Procedures

A  B  C  D  E  F  G  H  Not applicable

Internal Operating Procedure D refers to items accepted at the landfills as described in the Waste Recycling Program Guide.